

KOREICF

The KORE Insulated Concrete Formwork system is ideal for constructing:

- ▶ External walls
- ▶ Internal walls
- ▶ Load bearing walls
- ▶ Retaining walls
- ▶ Basements
- ▶ Footings
- ▶ Swimming pools



Description

Insulated Concrete Formwork is an advanced modern method of construction. KORE ICF products are modular interlocking concrete forms consisting of extra heavy density expanded polystyrene panels which are connected with a series of equally spaced injection moulded polypropylene bridges which are fixed with tensile steel into high impact polystyrene support tracts moulded into the polystyrene. Once the panels are laid they form a rectangular space into which concrete is poured. The concrete ensures the structural strength of the wall while the KORE panels remain permanently in place as thermal insulation for the life of the building.

KORE Advantages

U-Value of 0.20W/m²K achieved with 300mm wall, Unrivalled airtight construction, No thermal bridging, Concrete construction benefits, Superb fire resistant properties.

U-Values

Calculation Method I.S. EN ISO 6946.

External Finish	KORE Insulation Thickness	Concrete Thickness (mm)	Concrete Strength (N)	U-Value (W/m ² K)
Render	150	150	25	0.20
Render	150	200	25	0.19
Render	150	150	30	0.20
Render	150	200	30	0.20
Brick	150	150	25	0.19
Brick	150	200	25	0.19
Brick	150	150	30	0.19
Brick	150	200	30	0.19

Note: KORE ICF = 0.033W/mK

Concrete Specification

Strength	25 Newton
Slump	Max 150mm
Aggregate-150mm Concrete Core	10-13mm
Aggregate-200mm Concrete Core	10-19mm

Physical Properties

Properties	Units
Thermal Conductivity	0.033 W/mK
Density Minimum	25 kg/m ³
Compressive Strength at 10% deformity	150 kN/m ²
Bending Strength	200 kN/m ²
Water Vapour Permeability	33 g/m ² /day
Water Absorption by Total Immersion	0.2%

Installation

Installation of the KORE ICF System must only be carried out by Airpacks Ltd or by our approved Installers. For details of your local installer please contact Airpacks Ltd.

THERMAL BRIDGING & AIRTIGHTNESS SOLUTIONS

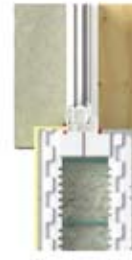
Roof Junction



Cill Detail



Jamb Detail



Header Detail



For further details on thermal bridging and airtightness at all junctions visit WWW.KORE-SYSTEM.COM

KORE Dual Panel

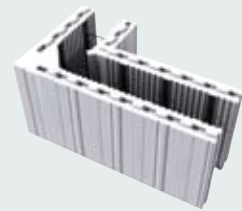
Function: Forms Wall Structure



Specification	150mm	200mm
Length	1200mm	1200mm
Wall Width	300mm	350mm
Height	417mm	417mm
EPS Depth p/sheet	75mm	75mm
Concrete Volume	0.15 cu/m per m ²	0.20 cu/m per m ²
Surface Area p/sheet	0.5m ²	0.5m ²
Quantity p/carton	6	6
Meter Squared p/carton	3	3
EPS Density	25kg/m ³	25kg/m ³

KORE 90° Corner

Function: Forms 90° Corners with one piece



Specification	150mm	200mm
Length Outside	900mm + 500mm	900mm + 500mm
Length Inside	600mm + 200mm	550mm + 150mm
Wall Width	300mm	350mm
Height	417mm	417mm
EPS Depth p/sheet	75mm	75mm
Concrete Volume	0.15 cu/m per m ²	0.20 cu/m per m ²
Surface Area p/sheet External	0.58m ²	0.584m ²
Surface Area p/sheet Internal	0.33m ²	0.29m ²
Quantity p/carton	2	2
Meter Squared p/ Carton	1.17	1.17
EPS Density	25kg/m ³	25kg/m ³

KORE Stop

Function: Forms thermally sealed window and door openings



Specification	150mm	200mm
Length	150mm	200mm
Height	417mm	417mm
EPS Width	75mm	75mm
Surface Area p/sheet	0.063m ²	0.083m ²
Quantity p/carton	12	12
EPS Density	25kg/m ³	25kg/m ³

KORE Header

Function: Insulation over window and door openings



Specification	150mm	200mm
Length	1200mm	1200mm
Width	150mm	200mm
Depth	50mm	50mm
Quantity p/carton	48	36
EPS Density	20kg/m ³	20kg/m ³

CERTIFICATION

KORE ICF successfully received IAB Certification proving compliance with Building Regulations 1997–2007. Certificate Number 08/0307.